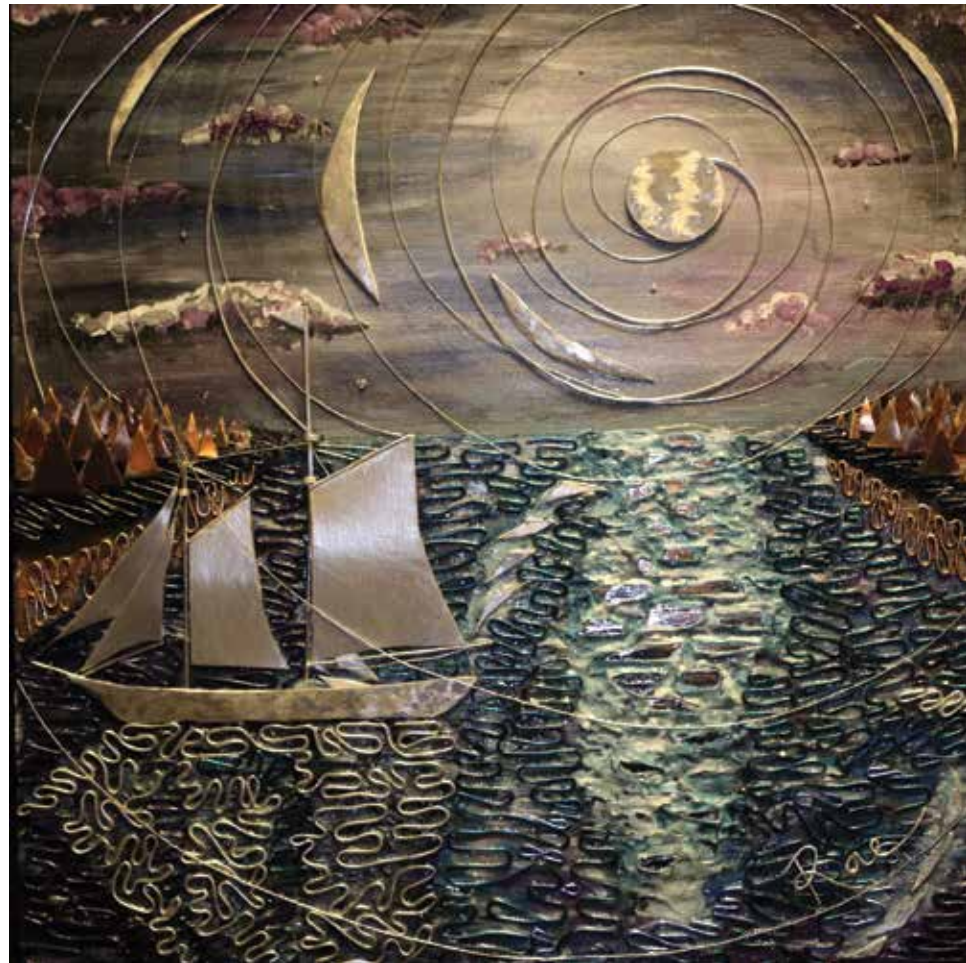


Tina Rae



“My artwork has developed and evolved over the years. I enjoyed painting realistically, but it wasn’t until I started experimenting with a looser style of acrylic painting and incorporating mixed media and metals that I found my unique voice as an artist. Mixed media adds emotion, depth, and dimension in a creative way. For me, every layer tells a story.

“The subject, rendered in metals, captures light from many angles and changes as you draw in for a closer look. It brings life to the artwork that cannot be captured by 2-dimensional pieces. The secondary images created in acrylics are painted to add to my interpretation of the main subject. Lastly, in the background,



far left: *Midnight Reflections*
top left: *Springtime Melody*
bottom left: *Robin Song*
above: *Take These Wings and Fly*

subtle words and images give more details and add interest. In all of my mixed-media artwork the metal pieces are individually cut by hand, then shaped and sometimes even torched to give each subject a unique and personalized quality that cannot be achieved in the same way by using a machine. Many pieces of my artwork also incorporate metal wiring that is woven into the image, and this allows me to capture more light, more angles, and more movement for each piece. Each piece of artwork is a labor of love. Because of the many layers of each painting and the intricate details, some pieces can take months to complete, but this allows me to fully embrace the idea I want to convey behind each painting.”