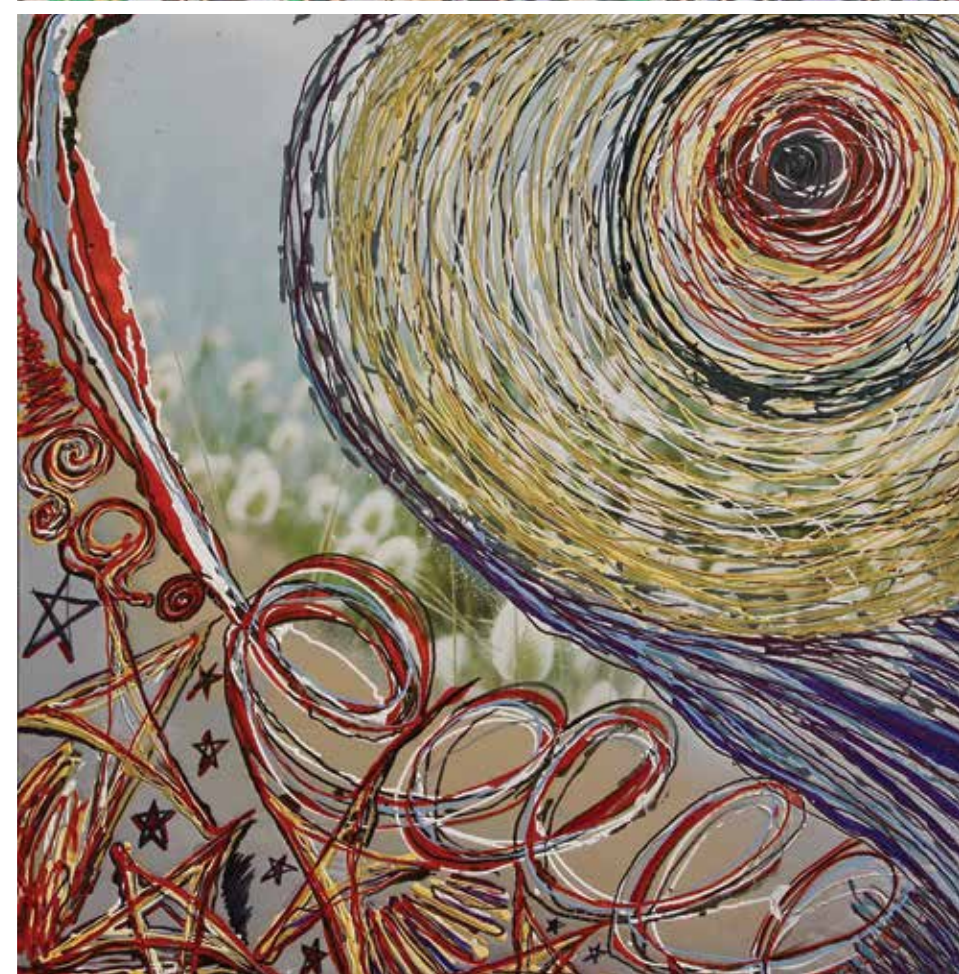




“These works are small glimpses into a particularly confusing but utterly unique worldview that entirely dictates and follows its own specific set of rules. To create these paintings, I use multiple layers of paint to create dimension and texture. Different styles and colors of paint are poured or layered onto each other until they create a 3D effect. Marker and pencil are used to create shadow, further enhancing these forms, and separating them from the background. Heavier layers and thicker brushes are used in the foreground to push the painting towards the viewer; whereas, thinner layers and small brushes are used in the background to elongate the space and push away from the viewer.

“A combination of interior and exterior elements are placed as a juxtaposition, making the audience question whether they are looking at something inside or outside.”

Anna Lee Hafer



left
Library
Swirl
Persuasion

right
Inarticulate Archive
Metaphysical Vault